



Next-Generation Pharmacy Benefits Powered by Modern Health Technology

The freedom to build your benefits, your way.



Capital Rx is a full-service Pharmacy Benefit Manager (PBM) that provides customers with the highest level of savings (trend reduction), scale (managing the largest customers in the nation), service (highest customer satisfaction scores), transparency (does not make money on drugs), and innovation (proprietary technology platform).



PHARMACY BENEFIT MANAGEMENT (PBM)

Capital Rx brings a unique level of transparency and financial alignment to the PBM industry, offering 350+ payers, including several Fortune 50 employers, everything from a full-service PBM solution to an “unbundled” model, Never Move Again™, leveraging clear pricing and modern technology to reduce administrative costs, improve patient outcomes, and deliver a superior customer experience.

- Single-Ledger Model™: brings visibility and consistency to drug pricing using the national average drug acquisition cost (NADAC) price index whenever possible.
- 100% pharmaceutical manufacturer revenue pass-through.
- Judi®, the AI-powered, cloud-native enterprise health platform, improves operational efficiency, supports robust clinical programs, and allows an award-winning call center to deliver industry-leading service to plan members.



PHARMACY BENEFIT ADMINISTRATION (PBA)

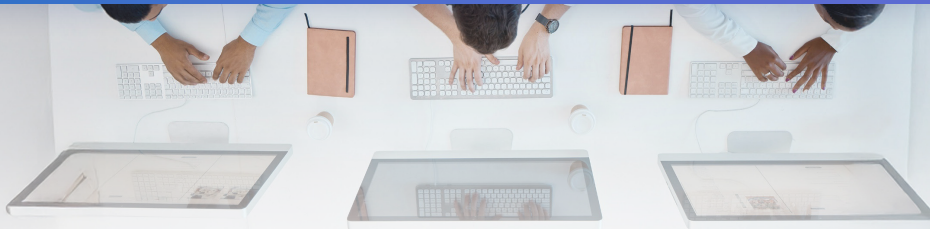
Capital Rx provides prescription drug claim processing and the enabling technology and services so others, including health plans and health systems, can set up and run pharmacy benefit programs for commercial, Medicare, and Medicaid plans. The modular design of the secure, scalable enterprise health platform allows partners to start with a full-service PBA model with Judi and become self-service over time.



CONTENT SPOTLIGHT

What Really Makes a Pharmacy Benefit Administration (PBA) Solution Different?





SERVICE EXCELLENCE*

18 Seconds

Avg. Speed of Answer

86

Member NPS

99%

Customer Satisfaction

90%

PTCB Certified Reps

*Based on Capital Rx Data for the 2024 Plan Year.

THE UPSIDE OF MODERN TECHNOLOGY VS. LEGACY CLAIMS PROCESSING SYSTEMS



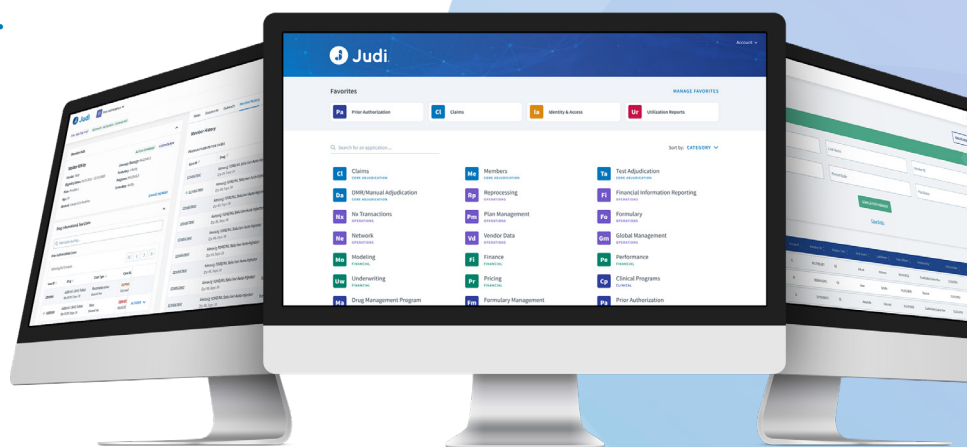
Data Ownership & Transparency



Tech-Enabled Flexibility & Scale



Real-Time, Self-Service Reporting & Analytics



CONTENT SPOTLIGHT

Why this benefit leader switched to a more modern, transparent PBM (Employee Benefit News)

“What we’ve uncovered so far just in our nine months is that year over year, our costs are down at least 5%. We implemented GLP-1s in the meantime... That’s unheard of in a healthcare market where everything’s going up.”

– Elaine Britt, Executive Director of HR Operations, Rice University